



# RAIL INITIATIVE

Global AI certification for a  
better tomorrow

[railcertification.org](https://railcertification.org)

Accredited supplier



# The AI Challenge:



In today's rapidly evolving workplace, artificial intelligence presents both unprecedented opportunities and significant current risks.

## Opportunity

AI can dramatically enhance productivity, efficiency, and competitive advantage across all sectors

## Risk

Untrained AI use is already happening, leading to security breaches, ethical issues, and even reduced productivity or quality of output

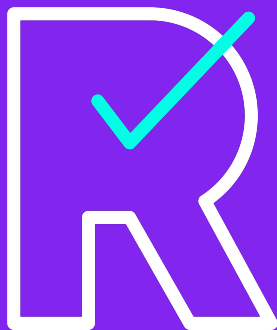
## Reality

Most people lack the foundational knowledge to leverage AI tools and platforms safely and appropriately in the workplace.

## The solution:



Industry-recognised, global certification for executives and teams:  
the Responsible use of AI Licence (RAIL)



- Essential knowledge of AI fundamentals and applications
- Practical skills, ethical considerations, security and risk management
- Platform agnostic training covering all major gen AI platforms and industry-specific tools
- Confidence in applying AI solutions to common workplace scenarios

# Online self-paced learning (with workshop option)



RAIL certification focuses on video delivery in 'snackable' short topic videos, perfect for busy individuals

## Flexible Online Learning



[Link](#)

Self-paced video learning for individuals and teams:

- 4 Core + 2 Elective Modules (three topics per module)
- Industry-specific and Role-based Electives
- Approx. 6 hours' duration + Options
- 12 months' access to regular content updates
- Blockchain-based credential upon completion

## Workshop option



[Link](#)

Intensive, hands-on training covering core RAIL Certification plus specialisation options.

All workshop attendees receive 12 months' access to RAIL online

# Online – Course Structure



With core modules plus specialised electives for agents and support staff  
RAIL ensures AI adoption is ethical, secure, and appropriate

## Core Certification Modules:

1 – Introduction to AI Fundamentals

2 – AI in the Workplace

3 – Ethics, Security & Privacy

4 – Prompt Engineering

## Industry and Role Electives:

+ AI in **Marketing**

+ AI in **Sales**

+ AI for **Office Admin**

+ AI for **Teachers**

## Platform Electives:

 **ChatGPT**

 **Copilot**

 **Claude**

 **Gemini**

+ MORE

# RAIL Aligns with Major International Competency Standards

Certification demonstrates competencies aligned with industry and government recognition pathways

## DigiComp 2.2

### EU Digital Competence Framework

*Foundational skills for all citizens*



- **Area 1: Information & Data Literacy**

AI-powered information evaluation and critical assessment

- **Area 2: Communication & Collaboration**

Responsible AI use in professional communication

- **Area 3: Digital Content Creation**

Advanced AI-powered content creation through prompt engineering

- **Area 4: Safety**

Data protection and AI risk management

- **Area 5: Problem Solving**

AI-powered decision making and industry applications

*RAIL builds competence in DigiComp 2.2 focus areas*

## SFIA



### Skills Framework for the Information Age

*Professional ICT competencies for digital workforce*

- **AI-Specific Skills**

AI & Data Ethics (AIDE)

Machine Learning (MLNG)

Emerging Tech Monitoring (EMRG)

- **Strategy & Architecture**

Innovation management and emerging technology assessment

- **Development & Implementation**

Content creation and basic data analytics applications

- **Delivery & Operation**

Risk management and information security in AI contexts

- **Skills & Quality**

Professional development and competency frameworks

*RAIL provides strong coverage of SFIA Responsibility Levels 2-4*

# The Public Sector Context

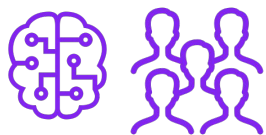


## Discussion → Strategy → Policy

Leaders focused on determining the impacts, benefits, and effective and appropriate approaches to AI use in their department/agency



**DISCONNECT**



## Untrained 'BYOAI' use

Staff are already experimenting with accessible public tools, absent appropriate guardrails or training



## RAIL bridges the gap

Foundational training ensures safe and appropriate use, and supports formal adoption strategies

# AI in the Public Sector Elective

Three topics, to be completed as part of complete RAIL certification

## Understanding AI in Government Context

### Learning outcomes

- Understand some ways in which AI is being used across the Australian public service
- Identify the unique considerations for AI use in public service
- Recognise the importance of transparency and accountability in government AI use
- Understand the governance framework established by the Policy for responsible use of AI in government

[Continue Study](#)

## Safe AI Use in Day-to-Day Public Service

### Learning outcomes

- Learn how to use AI tools safely within government guidelines
- Understand what information can and cannot be shared with AI systems
- Learn basic prompt techniques for common public service tasks
- Identify when to seek approval or guidance for AI use

[Continue Study](#)

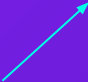
## Practical Applications and Future Readiness

### Learning outcomes

- Understand the importance of human judgment and intellectual autonomy when working with AI
- Apply human-centered design principles to AI-enabled services
- Understand transparency requirements and documentation best practices
- Develop skills for adapting to future AI developments in public service

[Continue Study](#)

*Click to  
access Public  
Sector page*





# AI in the Public Sector Elective

RAIL offers the only AI certification covering AI fundamental skills and mapped to the policy

## Topic 1: Understanding AI in Government Context



Module Content	Source Document Reference	Notes
OECD definition of AI	Policy for the responsible use of AI in government, p.9	Module cites the official definition adopted by the Australian Government
Application of AI across APS	Standard for AI transparency statements, Attachment A (pp.7-8)	Usage patterns and domains align with the official classification system
Policy for responsible use of AI in government	Policy for the responsible use of AI in government, pp.4-7	Module accurately represents the policy's purpose and aims
Governance framework (Accountable Officials)	Standard for accountable officials, pp.4-5	Correctly describes AO roles and responsibilities
Transparency requirements	Standard for AI transparency statements, pp.4-6	Accurately outlines the mandatory transparency statement requirements



*Click to access  
mapping document*

# Key benefits of RAIL certification



## For Organisations:

- Reduce AI-related risks
- Improve operational efficiency
- Ensure responsible AI adoption
- Future-proof your workforce
- Gain/sustain competitive advantage.

## For Individuals:

- Enhance workplace productivity
- Develop in-demand AI skills
- Build confidence in AI use and safety

# What RAIL graduates are saying



Users testify to the value of completing RAIL certification. A sample of recent testimonials:

"Very impressed with the content and how simple it was to follow. Short sharp video content is perfect for someone like me who has limited time to get up to speed. I'll be enrolling my team members in the course today."



**Jay Martin**  
General Manager,  
Finlease



"You have created an awesome course here. Detailed, yet easy to understand and comprehend. The navigation is well set up and the assessment is well designed – worked well as a repetition / reminder of the key points. I took note of your prompt examples, it's great to have a starting point."



**Brigitte Petrie**  
Account Director,  
Redvantage



"I found the content easy to understand and get me up to speed with the world of AI. More importantly it is set at the right level for the workplace where major risk and disruptions are happening. I am now confident exploring how I can use AI safely at work."



**Phillip Ow**  
Supply Chain Manager,  
UVEX



## Get Started

- Learn more about our programs
- View upcoming workshop dates
- Enroll your team
- Access sample course materials

[railcertification.org](https://railcertification.org)

Alternatively, contact your representative  
or RAIL direct:

**1300 998 527**



## Key Contact

Joel Gage

[joel.gage@getrail.org](mailto:joel.gage@getrail.org)

0449 255 770



Global AI Certification for a Better Tomorrow

[railcertification.org](https://railcertification.org)



## APPENDIX

Core Modules:

Learning Outcomes + Workplace Benefits

# Learning Outcomes & Workplace Benefits



## MODULE 1: INTRODUCTION TO AI

### Topic 1.1: Understanding AI Fundamentals and Terminology

<b>Understand the basics of AI</b> , including its history and development	→ Builds employee confidence to engage constructively with AI-related workplace changes and reduces resistance to new technologies
<b>Learn about the different types of AI:</b> Narrow AI, General AI, and Artificial Superintelligence	→ Ensures staff can distinguish between realistic AI applications and unrealistic expectations in workplace contexts
<b>Explore key AI technologies</b> such as Machine Learning, Natural Language Processing, and Robotics	→ Enables employees to recognise and understand AI tools already present in their work environment
<b>Define and explain common AI terminology and concepts</b>	→ Establishes a shared vocabulary across teams for clear communication about AI initiatives and policies

# Learning Outcomes & Workplace Benefits



## MODULE 1: INTRODUCTION TO AI

### Topic 1.2: Introduction to Major Generative AI Platforms and Real-World Considerations

**Get introduced to commonly used generative AI platforms**



Prepares employees to engage confidently with generative AI tools as they become standard workplace resources

**Understand the potential and limitations of AI in real-world scenarios**



Develops realistic expectations and helps employees avoid over reliance on AI whilst maximising appropriate use



# Learning Outcomes & Workplace Benefits



## MODULE 1: INTRODUCTION TO AI

### Topic 1.3: Beyond Generative AI

<b>Explore the diverse landscape of AI applications</b> beyond text and image generation	→ Broadens employee understanding of AI's role across different business functions and processes
<b>Understand the role of AI</b> in data analysis and predictive modelling	→ Enhances staff ability to interpret AI-driven insights and recommendations in their decision-making processes
<b>Learn about AI</b> in decision support systems, computer vision, image recognition, robotics and automation, and others	→ Provides context for understanding how AI integration may evolve across various workplace systems and processes
<b>Examine AI's role</b> in autonomous systems (e.g., self-driving cars, drones)	→ Builds awareness of AI's broader societal impact, supporting informed discussions about industry trends and future planning

# Learning Outcomes & Workplace Benefits



## MODULE 2: AI IN THE WORKPLACE

### Topic 2.1: Enhancing Workplace Productivity with AI

<b>AI tools for automation:</b> Learn how AI can automate routine tasks like email sorting and scheduling	→ Enables staff to identify opportunities for personal productivity gains and reduces time spent on repetitive administrative tasks
<b>AI-powered productivity platforms:</b> Explore tools for task management, reminders, and organisation	→ Supports employee adoption of productivity tools and improves personal workflow management
<b>Other productivity gains with AI:</b> Image Creation, Assisting with Spreadsheets, and various other uses	→ Broadens employee understanding of AI applications relevant to their daily work responsibilities
<b>Sample use cases:</b> Illustrative examples of individual employees and businesses improving productivity using AI	→ Provides relatable examples that help employees visualise practical applications in their own roles

# Learning Outcomes & Workplace Benefits



## MODULE 2: AI IN THE WORKPLACE

### Topic 2.2: AI Tools for Decision-Making

<b>Understand the role of AI</b> in improving data-driven decision-making processes	→ Enhances employee ability to work effectively with AI-supported analytics and recommendations in their decision-making
<b>Learn how AI supports business decisions</b> through predictive analytics and risk assessment	→ Builds confidence in interpreting and applying AI-generated insights within established business processes
<b>Explore practical applications of AI</b> in financial analysis and operational decision-making	→ Helps employees understand AI's role in supporting strategic business functions and organisational planning
<b>Discuss how AI helps leaders make informed decisions</b> by analysing large datasets	→ Develops employee understanding of how AI supports management decisions that affect their work environment

# Learning Outcomes & Workplace Benefits



## MODULE 2: AI IN THE WORKPLACE

### Topic 2.3: AI in Various Industries

<b>Understand how AI is transforming various industries</b> by improving efficiency, personalisation, and profitability	→ Develops awareness of AI's business impact, supporting informed discussions about organisational competitiveness and strategic planning
<b>Investigate AI applications</b> in manufacturing, retail, transportation, education, and more	→ Provides context for understanding how AI adoption may affect the organisation's operations and industry positioning
<b>Explore how AI enhances productivity, safety, and customer engagement</b> across sectors	→ Builds appreciation for AI's potential benefits, reducing resistance to technology adoption and supporting positive change management
<b>Discuss the role of AI in streamlining processes</b> such as compliance, HR, and customer service	→ Enables employees to understand how AI may transform their work environment and support organisational efficiency

# Learning Outcomes & Workplace Benefits



## MODULE 3: ETHICS, SECURITY, & PRIVACY

### Topic 3.1: Practical AI and Ethical Considerations

<b>Learn about the challenges of implementing AI in businesses</b> (e.g., scalability, costs)	→ Develops realistic understanding of AI implementation challenges, supporting informed participation in organisational AI discussions
<b>Explore basic ethical considerations when using AI</b> (e.g., transparency, accountability)	→ Builds employee confidence to raise ethical concerns and engage responsibly with AI-powered processes
<b>Understand how to navigate AI systems</b> and ensure responsible use in business environments	→ Enables staff to work effectively within established AI governance frameworks and policies

# Learning Outcomes & Workplace Benefits



## MODULE 3: ETHICS, SECURITY, & PRIVACY

### Topic 3.2: Protecting Organisational Data in an AI World

<b>Understand the basics of data privacy and security</b> in AI-driven environments	→ Enhances employee ability to protect sensitive information when using AI tools and systems
<b>Learn simple strategies to protect personal and professional data</b> when interacting with AI systems	→ Reduces organisational risk through improved employee data security practices
<b>Explore examples of AI-related data incidents</b> and their impact on individuals	→ Builds awareness of consequences, motivating careful adherence to data protection protocols
<b>Discover how to improve data security</b> in an AI-enhanced world	→ Enables proactive contribution to organisational cybersecurity and compliance efforts

# Learning Outcomes & Workplace Benefits



## MODULE 3: ETHICS, SECURITY, & PRIVACY

### Topic 3.3: The Social Impact of AI

<b>AI's influence on society:</b> Explore how AI is shaping various aspects of daily life, including any potential negative consequences	→ Develops broader understanding of AI's societal context, supporting thoughtful workplace discussions about technology adoption
<b>AI and employment:</b> Understand the impact of AI on job markets and future employment opportunities	→ Helps employees understand how AI may affect their career development and skill requirements
<b>Understand basic human rights regarding AI</b> including government responses, with reference to Australia's AI Ethics Principles	→ Provides foundation for understanding organisational AI policies and regulatory compliance requirements
<b>Explore resources for staying informed about AI policies affecting you</b>	→ Supports ongoing professional development and awareness of evolving AI governance landscape

# Learning Outcomes & Workplace Benefits



## MODULE 4: PROMPT ENGINEERING

### Topic 4.1: Fundamentals of Prompt Design

<b>Learn the basic principles of creating clear, effective prompts</b> for AI models	→ Enables employees to use AI tools more effectively in their daily work tasks
<b>Understand how prompt design influences the behaviour of generative AI systems</b> like ChatGPT	→ Builds confidence in working with AI tools and achieving desired outcomes
<b>Explore simple examples of prompt design</b> and its outcomes	→ Provides practical foundation for applying AI assistance to workplace challenges



# Learning Outcomes & Workplace Benefits



## MODULE 4: PROMPT ENGINEERING

### Topic 4.2: Crafting Effective Prompts for Common Tasks

<b>Explore examples of effective prompts for various professional tasks</b> (e.g., writing assistance, generating ideas, research help, solving basic problems)	→ Directly improves productivity and quality of work output across multiple job functions
<b>How to reduce bias in prompts</b>	→ Ensures more equitable and appropriate AI outputs in professional contexts
<b>Understand how to refine prompts</b> and reprompt to get better results	→ Develops problem-solving skills for maximising AI tool effectiveness
<b>Practice basic prompt design techniques</b> to improve response quality, using ChatGPT, Claude, Gemini, or Meta	→ Provides hands-on experience with widely-used AI platforms for immediate workplace application

# Learning Outcomes & Workplace Benefits



## MODULE 4: PROMPT ENGINEERING

### Topic 4.3: Managing Common Risks Associated with Generative AI Responses

<b>Understanding Generative AI Limitations and Risks</b>	→ Prevents overreliance on AI and supports appropriate integration into work processes
<b>Identifying and Mitigating AI Hallucinations</b>	→ Protects organisational reputation and decision-making quality through critical evaluation of AI outputs
<b>Developing Critical Thinking Skills</b>	→ Enhances overall professional judgement and analytical capabilities beyond AI contexts
<b>Handling AI-Generated Errors</b>	→ Builds resilience and problem-solving skills for managing technology-related challenges
<b>Fostering a Culture of Responsible AI Use</b>	→ Contributes to positive organisational culture around technology adoption and ethical practices